

MONTHLY MEMBERSHIP PROGRESS REPORT

District 5 SKS

Results as of: 4/30/2024

GMT:

LOCATION CANADA

GMT CA

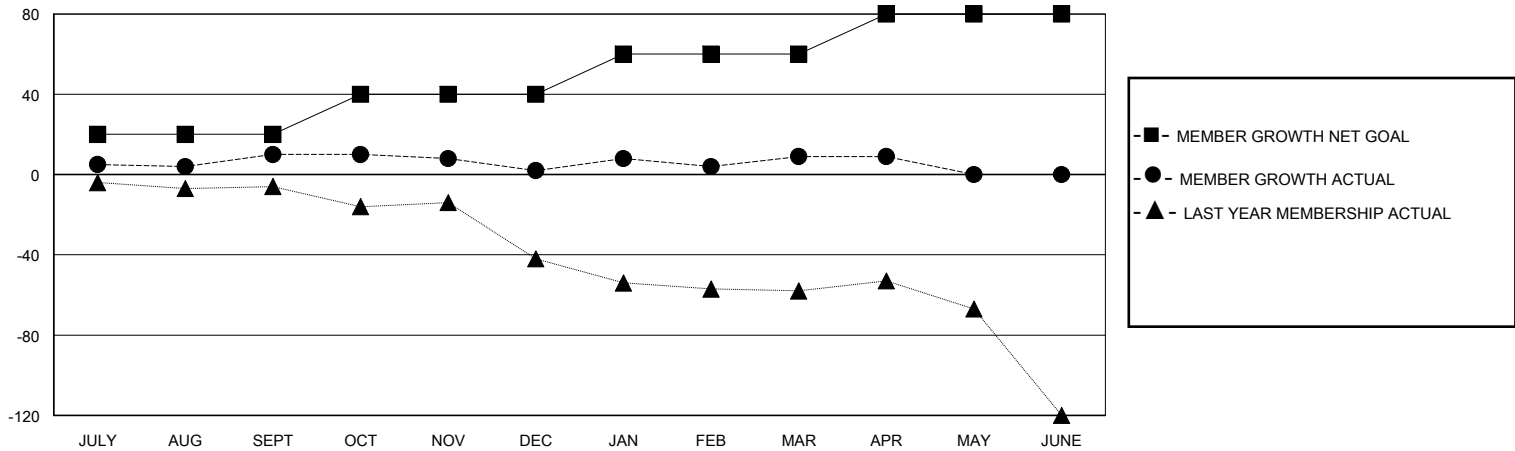
Clubs			
RESULTS FOR 2023-2024			
QUARTER	NEW CLUB GOAL	NEW CLUBS	DROPPED CLUBS
JULY/AUG/SEPT	0	0	0
OCT/NOV/DEC	1	0	0
JAN/FEB/MAR	0	0	0
APR/MAY/JUNE	0	0	0

Members			
RESULTS FOR 2023-2024			
QUARTER	MEMBER GROWTH NET GOAL	MEMBER GROWTH ACTUAL	DROPPED MEMBERS ACTUAL (including transfers)
JULY/AUG/SEPT	20	31	13
OCT/NOV/DEC	20	41	47
JAN/FEB/MAR	20	26	18
APR/MAY/JUNE	20	11	11

GOALS AND ACTUAL NEW CLUBS CUMULATIVE



GOALS AND ACTUAL MEMBERS CUMULATIVE



DROPPED CLUBS: 0	36 CLUBS OF 70 ADDED 1 OR MORE NEW MEMBERS	GENDER DISTRIBUTION MALE 958 (71.55%) FEMALE 381 (28.45%)
DROPPED MEMBERS DECEASED 13 CLUB CANCELLED 0 OTHER 74 TOTAL 87	CLICK HERE FOR CUMULATIVE MEMBERSHIP DATA	TOTAL FAMILY UNIT MEMBERS 189 FAMILY MEMBERS PAYING HALF DUES 96